

**Subscribe**

**Share** ▼

**Past Issues**

**Translate** ▼

[View newsletter in your browser window](#)



American Planning Association  
**Wisconsin Chapter**

*Making Great Communities Happen*



**MSA**

**PROFESSIONAL SERVICES**

More ideas. Better solutions.®

**800.446.0679**

**[www.msa-ps.com](http://www.msa-ps.com)**

ENGINEERING • SURVEYING • ARCHITECTURE • ENVIRONMENTAL • PLANNING • FUNDING



**Spring 2015 Newsletter**

**Thank you to MSA Professional Services, our Silver Level sponsor for the Spring Workshop.**

For more information about becoming a sponsor of the 2015 Upper Midwest APA Conference, hosted by the Wisconsin chapter, please contact chapter president Linda Stoll at [president@wisconsinplanners.org](mailto:president@wisconsinplanners.org).

[Subscribe](#)[Share ▼](#)[Past Issues](#)[Translate ▼](#)

In this issue . . .

- Wisconsin Wetlands Association county factsheets
- Upper Midwest APA Conference, October 12-13, on Adaptive Planning
- New chapter membership options launched
- In Our Thoughts and Memories: Max Anderson, Welford Sanders, and Harvey Rabinowitz
- New AICP Planners
- Law Update

## **New Data and Fact Sheets Help Communities Understand and Address the Legacy of Wetland Loss**

### **Wetland Fact Sheets for 33 Wisconsin counties now available--39 more coming soon**

Wisconsin Wetlands Association (WWA) has released the first batch of a new series of fact sheets about wetlands in each county. The County Wetlands Face Sheets are designed:

- to improve wetland understanding and engagement;
- to promote the availability of new wetland datasets; and
- to help communities identify opportunities to restore wetlands to improve watershed health.

WWA describes the fact sheets as a "tool that planners and educators can use to increase communities' awareness of where wetlands are, and were, and to stimulate discussions about how changes in the wetland landscape may have contributed to problems such as water quality and flooding."

Each fact sheet contains maps and tables showing current and potentially restorable wetlands in the county, as well as maps to illustrate changes in historic wetland land cover at the county and sub-watershed (HUC 12) scales. Information on how to obtain the wetland spatial data used to create the maps, and tips for how it can be used in local planning and policy development, are also included.

"This data," says WWA's Policy Director and project manager Erin O'Brien, "will be incredibly useful to any community interested in evaluating where to restore wetlands for the greatest

[Subscribe](#)

[Share](#) ▼

[Past Issues](#)

[Translate](#) ▼

positive impact." The data shows that opportunities to restore wetlands to improve water quality and reduce flooding remain abundant in many parts of the state.

The fact sheets were created with assistance from a UW - Madison graduate student seminar, using current and potentially restorable wetlands (PRW) spatial data produced by the Wisconsin Department of Natural Resources (WDNR). The project is part of a larger WWA initiative to help communities improve consideration of wetlands in land use planning and policy development.

Wetland Fact Sheets for 33 of Wisconsin's 72 Counties are currently available for free download at: [www.wisconsinwetlands.org/countyfactsheets.htm](http://www.wisconsinwetlands.org/countyfactsheets.htm). WWA hopes to secure funding to produce fact sheets for the remaining counties later this year.

The PRW data is also available and for all 72 Counties. The data can be downloaded through WDNR's Surface Water Data Viewer (<http://dnr.wi.gov/topic/SurfaceWater/swdv/>).

Questions about the County Wetland Fact Sheets and associated outreach should be directed to Erin O'Brien at [policy@wisconsinwetlands.org](mailto:policy@wisconsinwetlands.org) or 608-250-9971.

[Back to top](#)

**GRĀEF**  
collaborate  
formulate  
innovate

urban design  
site development  
comprehensive plans/updates  
downtown revitalization  
redevelopment plans  
form-based zoning  
corridor studies  
town & neighborhood plans

**planning**

[www.graef-usa.com](http://www.graef-usa.com)

Leadership in Planning Services, Enhancing Wisconsin Communities

**100**  
YEARS OF  
INFRASTRUCTURE  
SOLUTIONS

**HNTB**  
[www.hntb.com](http://www.hntb.com)

URBAN PLANNING  
ENVIRONMENTAL  
TRANSIT/RAIL PLANNING  
GIS MAPPING  
URBAN DESIGN  
LANDSCAPE ARCHITECTURE  
ECONOMIC ANALYSIS

Building a Better World for All of Us®

**SEH**

Engineers | Architects | Planners | Scientists  
Andrew Dane, AICP • 888.413.4214 • [adane@sehinc.com](mailto:adane@sehinc.com) • [sehinc.com](http://sehinc.com)

**vierbicher**  
planners | engineers | advisors

Reedsburg • Madison • Prairie du Chien  
800-261-6468 • [www.vierbicher.com](http://www.vierbicher.com)

vision to reality

Thanks to our 2015 conference sponsors, including the Association of Wisconsin Regional

[Subscribe](#)

[Share](#) ▼

[Past Issues](#)

[Translate](#) ▼

Planning Commissions and the planning firms shown above. Here is some early information about the Upper Midwest APA Conference, October 8-9, in Madison, Wisconsin.

## APA Wisconsin hosts Upper Midwest APA this Fall

The call for [session proposals](#) for the chapter's fall conference hit the street in the past week. The conference committee selected the conference theme, "Adaptive Planning: New Solutions for Changing Times". In the face of rapidly changing economic conditions, climate change, and rapidly evolving technology in the office and in the development world, happens fast. Adaptive management is a planning approach that acknowledges the unpredictability of our environment and offers tools for responding to changes while continuing to move toward long-range goals.

The conference committee invites planners to submit session ideas and volunteer to share their experiences adapting to changing circumstances.

Suggested topics include: Active Community and Neighborhood Design (Issues of health, walkability, mix of uses, social factors, etc.)

Ways to Get the Job Done (Technology in planning, methods, community involvement and implementation)

Efficient Transportation (walking, biking, roads, transit, complete streets, parking, freight, etc.)

Rural Lands & Natural Resources (farmland preservation, planning issues, conservation, resource extraction, working lands)

Economic and Re-development (planning's role in growing the local economy, trends in business growth, demographic trends impacting local community development, strategies for small towns)

Water Management (Green Infrastructure, partnerships, groundwater, stormwater, drinking water, waterfront development & zoning)

[More information](#) about the conference, including becoming a sponsor.

*"Building Relationships with a Commitment to Client Satisfaction through Trust, Quality and Experience."*



**JSD Professional Services, Inc.**  
• Engineers • Surveyors • Planners

Madison, WI 608.848.5060  
Milwaukee, WI 262.513.0666  
Kenosha, WI 262.925.8367

[www.jsdinc.com](http://www.jsdinc.com)

- Planning & Development
- Civil Engineering
- Transportation Engineering
- Municipal Engineering
- Structural Engineering
- Water Resources
- Landscape Architecture
- Construction Services
- Surveying & Mapping



**SAA DESIGN GROUP**  
Landscape Architects  
Engineers  
Planners  
[www.saa-madison.com](http://www.saa-madison.com)

COMMUNITY WAYFINDING TRAFFIC STUDIES  
BIKE & PEDESTRIAN NEIGHBORHOOD REDEVELOPMENT METRICS

Subscribe

Share ▾

Past Issues

Translate ▾

## In Memory of . . .

- Welford Sanders, who led redevelopment of King Dr. in Milwaukee
- Max Anderson, coordinator of Wisconsin's first state planning effort, author of studies entitled "Plan for Wisconsin," "Land Use," and "Facilities" in Wisconsin
- Harvey Rabinowitz, UWM teacher and scholar of urban design

# Welford Sanders, planner and educator



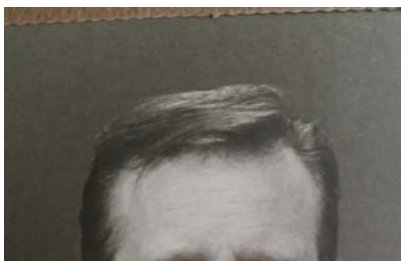
The Journal-Sentinel ran this story about Welford Sanders' work in Milwaukee. The UWM faculty in Urban Planning miss him and his enormous talents and dedication to rebuilding Milwaukee's neighborhoods and mentoring planning students who shared his vision.

Welford was a mentor and thought leader in the UWM Department of Urban Planning, where he taught for over 20 years. During that time, he taught many students, but he taught us, his colleagues, as well. Each time we were together, he would share some anecdote or information about his work, whether on King Drive or with another community organization, that would make us all better planners and a better teachers.

Welford's persistent, painstaking, and skilled work was about improving the lives of low-income and working class people in Milwaukee. His impact will be felt across the city for many years to come. He was respected and admired by all who came to know him and his accomplishments.

He showed us what it means to work for economic justice and social equity in Milwaukee, or any city where people are distressed and communities are suffering. His voice will ring in our hearts as we continue to strive to live up to his expectations. He made us better. We miss him deeply.

# Max Anderson, Madison-based planner during the 1960s, Anderson is remembered for his thoughtful work



Max Anderson, 87, of Mexico, MO, passed away Saturday, May 23, 2015 at Audrain Medical Center in Mexico. Per his request, no formal services are being held.

This obituary was shared with us by his family.

[Subscribe](#)[Share ▼](#)[Past Issues](#)[Translate ▼](#)

Max was born October 17, 1927 in Marion, OH to Paul and Delia Groll Anderson. He served his country with honor in the United States Navy and was a veteran for peace. He was a consultant and lecturer in urban and regional planning, economics and design. His career spanned nearly 60 years and included public agencies at all levels of planning ranging from larger multi-state regions down to cities and neighborhoods.

After receiving his B.A. in economics and Master's degree in city planning from U.C. Berkley, he was the author of demographic and economic studies of the New York metropolitan region for the Regional Plan Association. From 1956-1958 he was a senior planner at Pacific Planning and Research in Palo Alto, CA; organizing hearings and preparing legislative proposals and reports on regional planning and the conservation of agricultural land

resources for a committee of the State Legislature.

From 1958-1961 he was Chief of Planning for Candeub, Fleissig, then the second largest planning consulting firm in the nation, supervising the preparation of comprehensive plans and development regulations for communities in the headquarters State of New Jersey and branch offices in other states.

### **Anderson's Madison Work**

He opened his own office in Madison, WI in 1961 and branch offices later in Iowa and Illinois. He was principal planner and author of master plans and development regulations for a total of five entire counties, 86 municipalities, 46 tax increment districts, four cases for incorporation of towns as villages, coordinator of Wisconsin's first state planning effort, author of studies entitled "Plan for Wisconsin," "Land Use," and "Facilities" in Wisconsin, consultant to the Wisconsin Governor's office, Departments of Administration, Resource Development, Health and Human Services, and the Federal Surplus Property Development Commission, urban planner for two new towns, consultant and author of several studies for the Upper Great lakes Regional Commission, including the Commission's report to Congress entitled "Development Strategies Upper Great lake Region." He was a lecturer in the graduate school of urban and regional planning at the University of Wisconsin in Madison, 1962-1965, teaching courses in planning theory and practice.

In the following years, ending in his retirement in 2008 from a busy career, he retired in Columbia Missouri working on many innovative city planning projects and campaigns in the City. He wrote numerous newspaper articles in the Columbia Tribune and introduced many proposals to the City and County boards and commissions.

He was a stellar person that made an enormous foot print in the hearts of his family and friends and in the communities that he served nationwide, working tirelessly and selflessly his whole life to improve people's lives and the environment. He was a trailblazer and visionary in city planning theory and practice. Many family members worked for him at various times and a number trained under his tutelage to become successful planners, business owners, environmentalists, community organizers and politicians because of his creative and inspiring influence.

He will be deeply missed by all who knew him and his work. He is survived by a son, Douglas Anderson & wife Jerri Lynn of Mazomanie, WI; daughter, Alison Anderson & husband Lucien ("Lou") Phemister of Jefferson City, MO; grandchildren, Maxwell and Nina Anderson of Mazomanie, WI and Crawford NE; sister



[Subscribe](#)

[Share](#) ▼

[Past Issues](#)

[Translate](#) ▼

and brother-in-law, Joan & Sid Sullivan of Columbia, MO. He was preceded in death by siblings Paul, Walt, Robert Anderson and Winifred Fout, all of Marion, OH. Online condolences may be left for the family at [www.parkerfuneralservice.com](http://www.parkerfuneralservice.com)

# Harvey Rabinowitz, architect, UWM professor, and real estate expert

Professor Harvey Rabinowitz passed away on June 4, 2015.



This remembrance is from the UWM School of Architecture and Urban Planning, where he mentored planning students in both the joint Architecture and Urban Planning masters program and the real estate certificate program.

As a teacher, as a scholar, and as a colleague, Harvey was irreplaceable. He loved learning, and was uniquely able to communicate that love to students. He changed the lives of many students with his inspired teaching. He was one of the best UWM teachers during his 45 years of service; passionate, committed to high standards, a superb communicator, and a wonderful classroom presence.

As an academic, he was keenly interested in the development of cities, especially Milwaukee. He learned the numbers and taught young minds the politics and economics of making positive change.

He knew how to compromise, but never compromised principles. He was enormously proud of his students. He gave time to people, and was interested in you, whatever you were doing.

Harvey was held in high esteem by everyone who worked with him. He was elected or appointed to crucial university committees—all of which he carried through with humility, fair-mindedness, and an enduring personal honesty.

Harvey, thank you for reminding us that time is precious, and that pure expressions of kindness and love are the only things in life that really count. And thanks, most of all, for being our friend.

**teska**  
 WWW.TESKAASSOCIATES.COM  
 PLANNING • LANDSCAPE ARCHITECTURE  
 SITE DESIGN • COMMUNITY ENGAGEMENT  
 ECONOMIC DEVELOPMENT

📍 Evanston, IL | 847.869.2015  
 📍 Plainfield, IL | 815.436.9485

**Building Community  
 Creating Place**  
 SINCE 1975

**LEADERS  
 & innovative**

Planning and redevelopment  
 Landscape architecture  
 Historic preservation

**Mead & Hunt**

Green Bay • La Crosse • Middleton • Wauwatosa • meadhunt.com • 1-888-225-6323

**Subscribe**

**Share** ▼

**Past Issues**

**Translate** ▼

[Back to top](#)

## New Membership Options Fully Launched

IN the last issue of this newsletter, we reported on the chapter's plan to enhance membership options to broaden our membership base. Implementation is now underway.

This newsletter is being delivered to at least one new chapter-only member who signed up for the state-only membership using our new electronic system, launched this spring. The chapter-only membership is especially attractive for planners in planning-related professionals (urban designers, landscape architects, economic development professionals, etc.), whose primary organizational memberships are in related disciplines.

For just \$45 per year, individuals may subscribe and receive all of the email updates, newsletters and law and legislative updates we send to our regular members.

Students who are not in an accredited planning program are now eligible for a free student membership to the Wisconsin Chapter.

Both of these membership options are available on the webpage and can be completed using your mobile device.  
<http://wisconsinplanners.org/membership-account/>

## Help Us Reach Your Commissioners:

**Professionals in Related Fields**

**Planning Commissioners**

**City Council Members**

**City Managers**

**City Engineers**

**Undergraduate Students**



[Subscribe](#)

[Share](#) ▼

[Past Issues](#)

[Translate](#) ▼

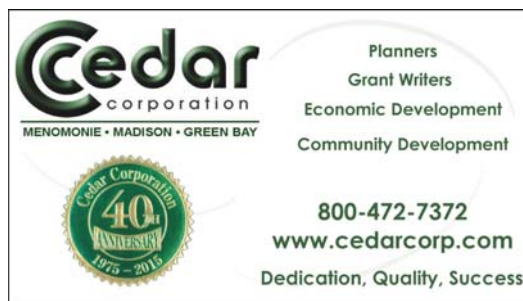
## New Organizational Rate for Non-Professionals

The Chapter also has been working to identify ways that we can connect more effectively with an important stakeholder group--plan commissioners and other public officials who make the decisions about plans and development. One of our first efforts is to make it easier and less expensive for plan commissioners to become members of the APA - WI Chapter.

Government organizations are now eligible to obtain APA-WI memberships for volunteer (unpaid) and non-professional persons who undertake planning activities for their organizations on a **flat \$50/year group-rate basis**. Examples of volunteers eligible for non-professional APA-WI memberships include members of plan commissions and town and village boards. To subscribe your local officials and planning commission or committee volunteers, contact Rich Kedzior at [rkedz@hotmail.com](mailto:rkedz@hotmail.com) or 608-268-3917 for more information about group membership for your organization's volunteer planners.

### Graduate Students not in an accredited planning program

[Back to top](#)



## Congratulations New AICP Planners

During the November 2014 and May 2015 AICP exam cycle, fourteen Wisconsin planners passed the AICP exam and will soon be putting those letters (AICP) behind their name—once they pay their AICP dues.

Congratulations. AICP tells the world that you have achieved a level of distinction in the profession and that you value the continuing

- Timothy Acklin
- Kristin Connelly
- Colleen Hoesly
- Rebecca Kerwin
- Lewis Kuhlman
- Urvashi Martin
- Monica Wauck
- Nolan Zaroff
- Rachel Holloway
- Craig Huebner
- April Kroner
- Coleman Peiffer

[Subscribe](#)[Share](#) ▼[Past Issues](#)[Translate](#) ▼

professional development that AICP requires. Be proud. You deserve it.

Sonja Reichertz  
Mark Sauer



[Back to top](#)

## Law Update

As of March 3 2015

**By Brian W. Ohm, JD**  
**VP of Chapter Affairs**  
**Dept. of Urban & Regional Planning**  
**UW-Madison**

For questions or comments about these cases, please contact: [bwohm@wisc.edu](mailto:bwohm@wisc.edu).

Copyright © |2014| American Planning Association -Wisconsin Chapter| All rights reserved.

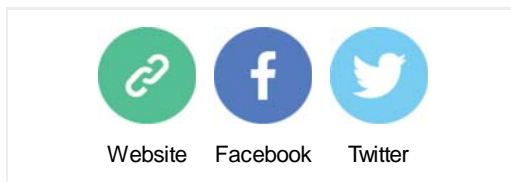
**BREAKING NEWS: APA issued [this report](#) on the latest Supreme Court case, *Reed v Town of Gilbert (AZ)* related to signage and First Amendment rights.**

Visit the website for [cases reported in May](#):

- City's decision to rescind a conditional use permit was overturned because the decision was not based on substantial evidence (*Oneida Seven Generations Corp. v. City of Green Bay*)
- Court of Appeals approves circuit court assertion of discretionary authority of court to modify an easement (*Muellerberg v. Wisconsin DOT*)
- More interpretation of the requirements for "clear and unambiguous law" in drafting zoning ordinances (*Vilas County v. Accola*)
- "Class of one" equal protection claim considered in Monona case by US Court of Appeals (*Miller v. City of Monona*)

Case law updates are posted monthly, usually in the second half of the month, at the Chapter [Law and Legislation](#) page.

[Back to top](#)



Copyright © 2015 American Planning Association - Wisconsin Chapter, All rights reserved.

**Subscribe**

**Share** ▼

**Past Issues**

**Translate** ▼

